

# Animal Explorers

This term we are going to find out about all kinds of animals through role-play. We will enter the jungle and investigate animals which come from eggs. We will also find out all signs of new life with our exciting farm visit.

## Dates to remember

**25<sup>th</sup> & 26<sup>th</sup> February:** Parent Evenings

**5<sup>th</sup> March:** World Book Day. Come to school dressed as your favourite book character.

**13<sup>th</sup> March:** Mothers Day Lunch. Mothers or another female family member are welcome to share a lunch with their child (12:00-1:00).

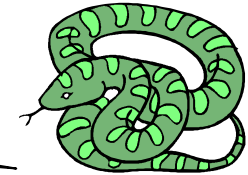
**20<sup>th</sup> March:** The farm is coming to visit Penguin and Zebra Classes.

We are looking at animals and their young in the jungle and the farm.

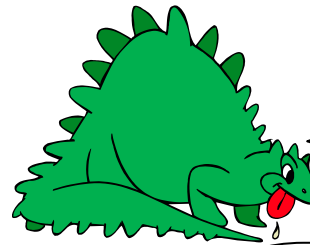


We are looking for signs of new life around us during spring, on our forest walks and in our RE week.

We want to look at how animals and plants are similar or how they are different.



We want to find out which animals come from eggs and design our own animals from eggs and make them using split pins



We will find out why the egg is a symbol of new life.



## Parents, you can help by...

- Asking your child which animal they would like to find out about. Help them research using both books and the internet. Remember to remind your child about our e-safety rules.
- Practising counting 1 more and 1 less than a number.
- Spotting signs of Spring outside on your way to school and at the weekends.